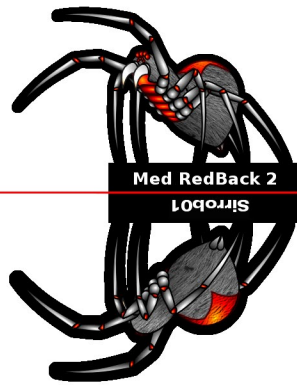


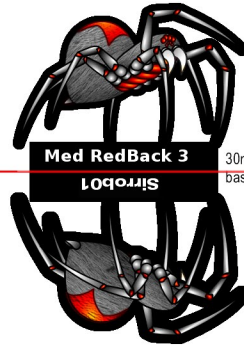
Med RedBack 1

30mm  
base



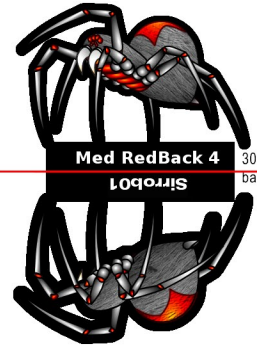
Med RedBack 2

30mm  
base



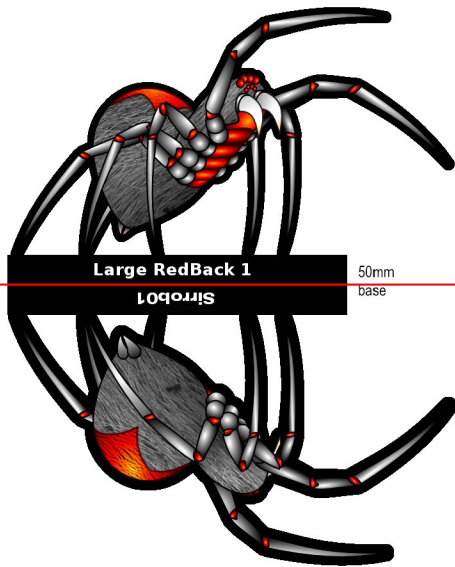
Med RedBack 3

30mm  
base



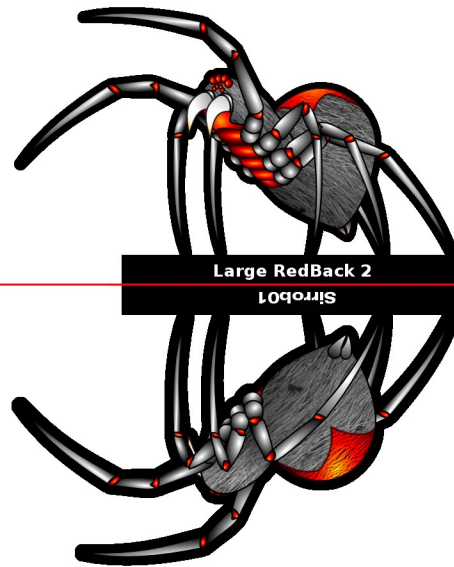
Med RedBack 4

30mm  
base



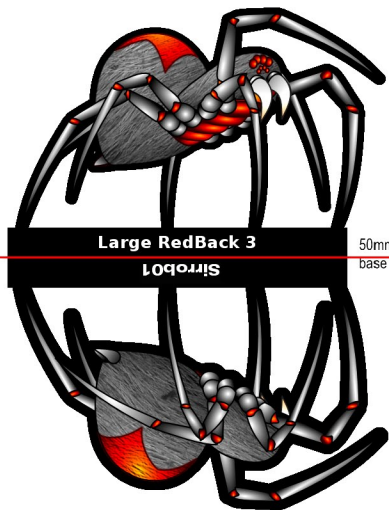
Large RedBack 1

50mm  
base



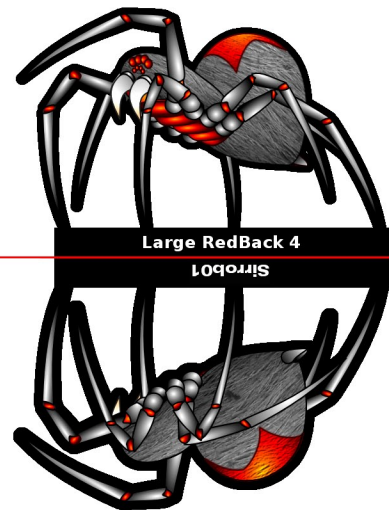
Large RedBack 2

50mm  
base



Large RedBack 3

50mm  
base



Large RedBack 4

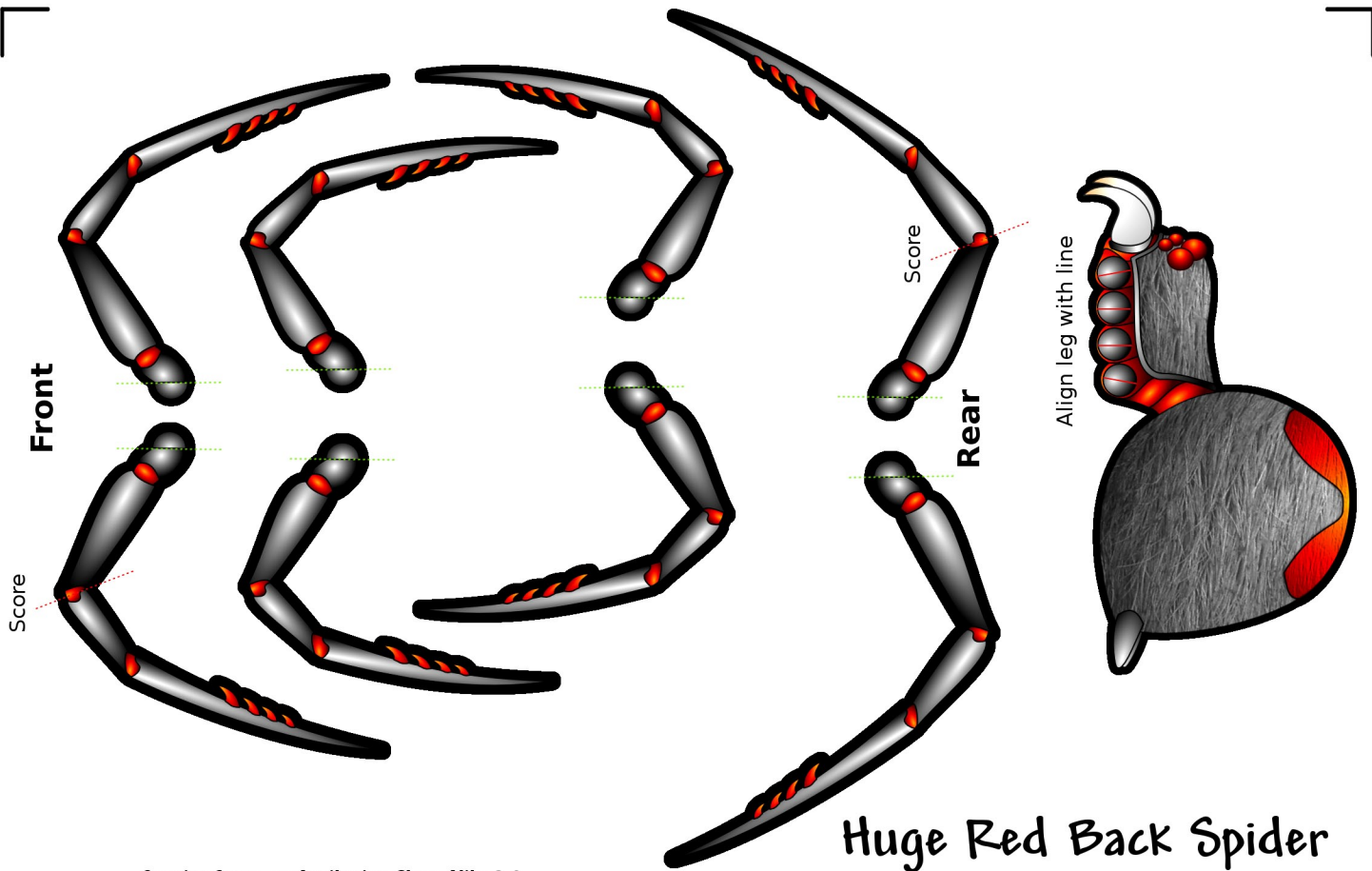
50mm  
base

Creative Commons Attribution-Share Alike 3.0  
<http://sirrob01.wordpress.com/>

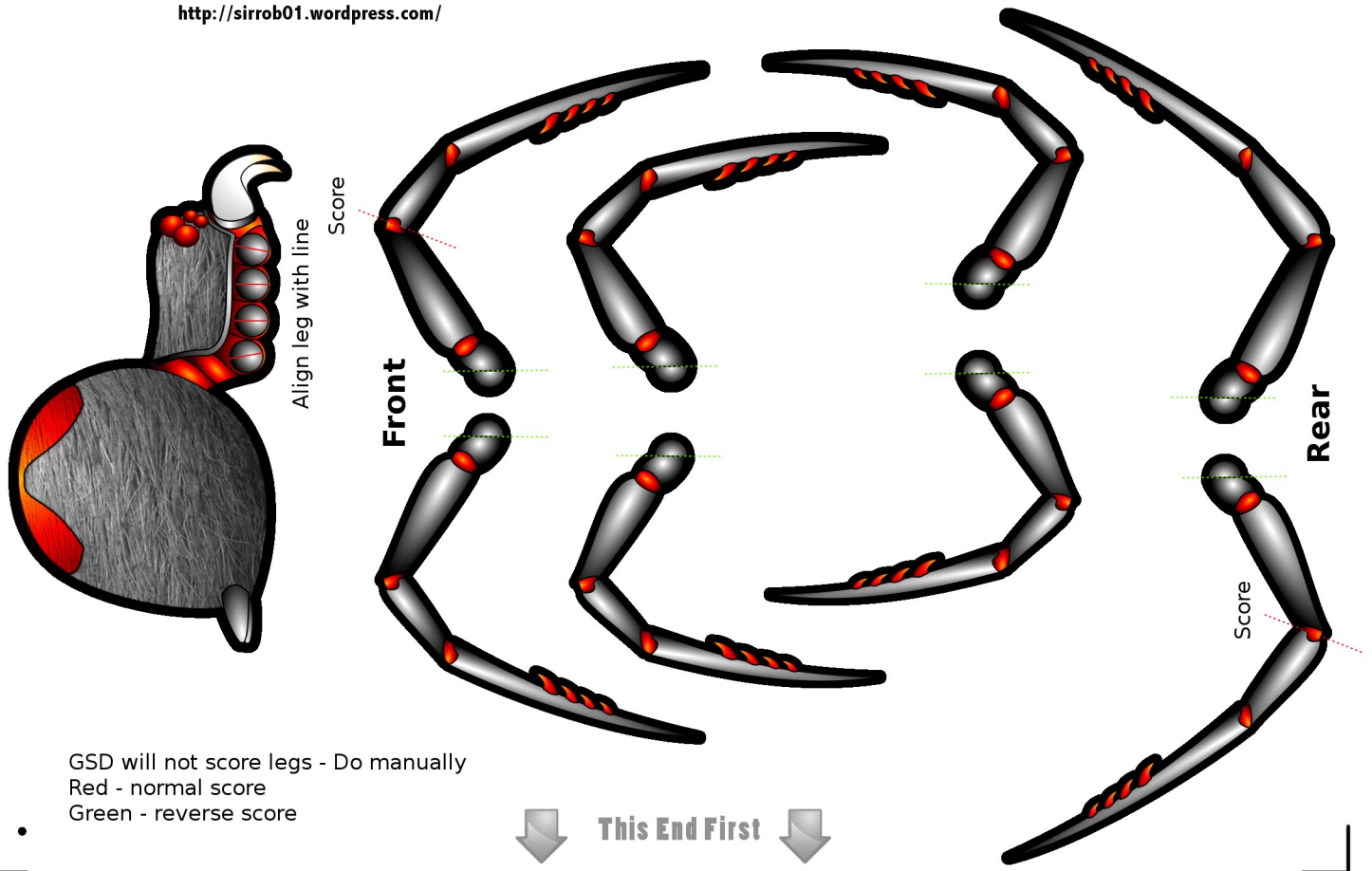


This End First



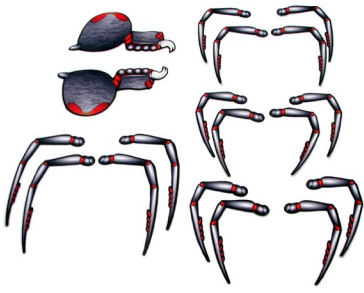


Creative Commons Attribution-Share Alike 3.0  
<http://sirrob01.wordpress.com/>



GSD will not score legs - Do manually  
 Red - normal score  
 Green - reverse score

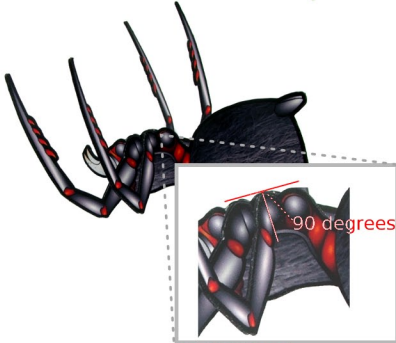
# Huge RedBack Spider Instructions



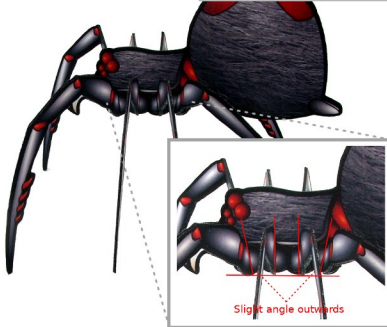
Cut out all the components and edge using a black marker.



Score the fold tab on each leg half and bend it back.  
Glue the leg halves together ensuring the glue tabs remain separate.  
~ Longest Legs rear pair  
~ Next longest front legs  
~ Shortest 2 pairs middle legs



Glue the middle legs into place on the body using the middle two spots. The legs should be mounted vertically (use the redlines as a guide - see pic insert)  
Mount the legs on both sides.



Glue the front and rear legs on ensuring they are mounted at a slight angle. (use the redlines as a guide - see pic insert)  
Once the glue dries bend the legs forward and backwards on the score lines.

Mount to a base or use as is.

Huge Redback base template  
(8cm x 9cm or 3 inch x 3.5 inch)

