

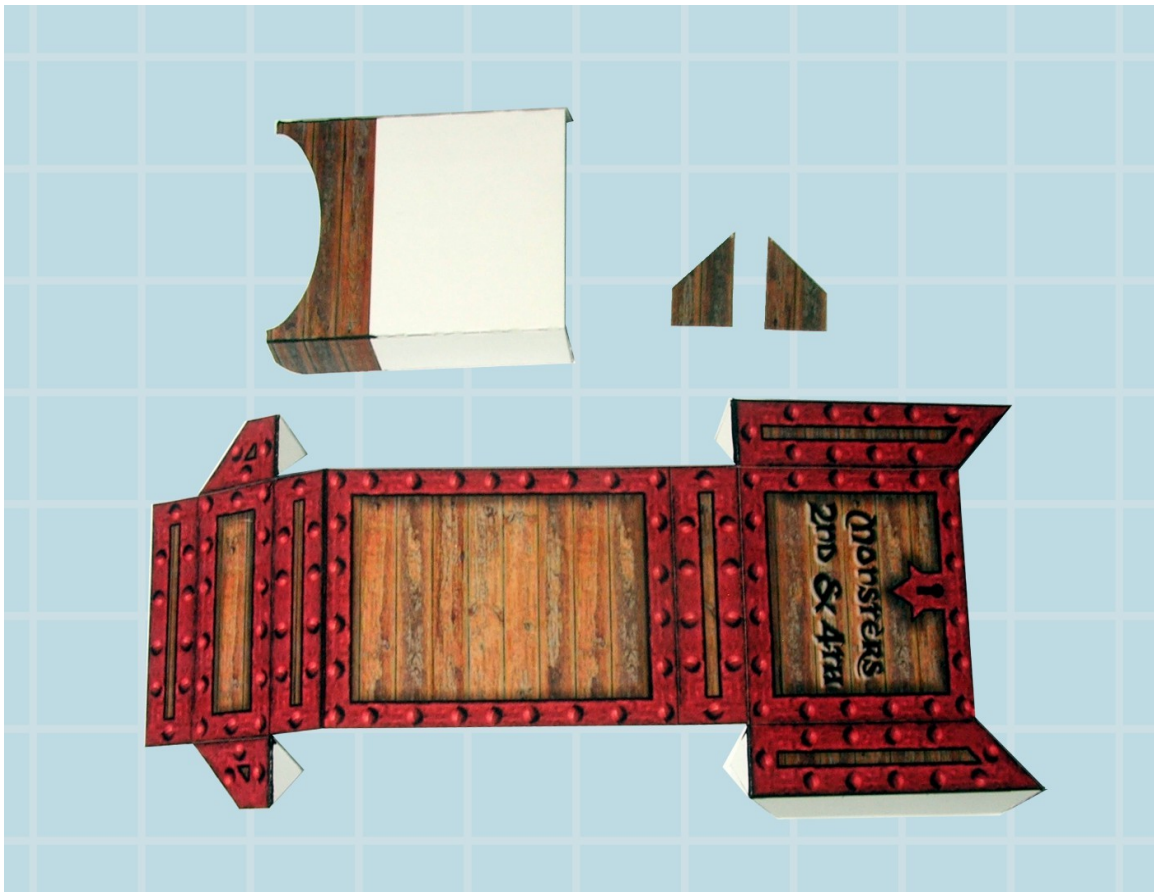
Dungeon!

Card-box Quick Assembly Instructions

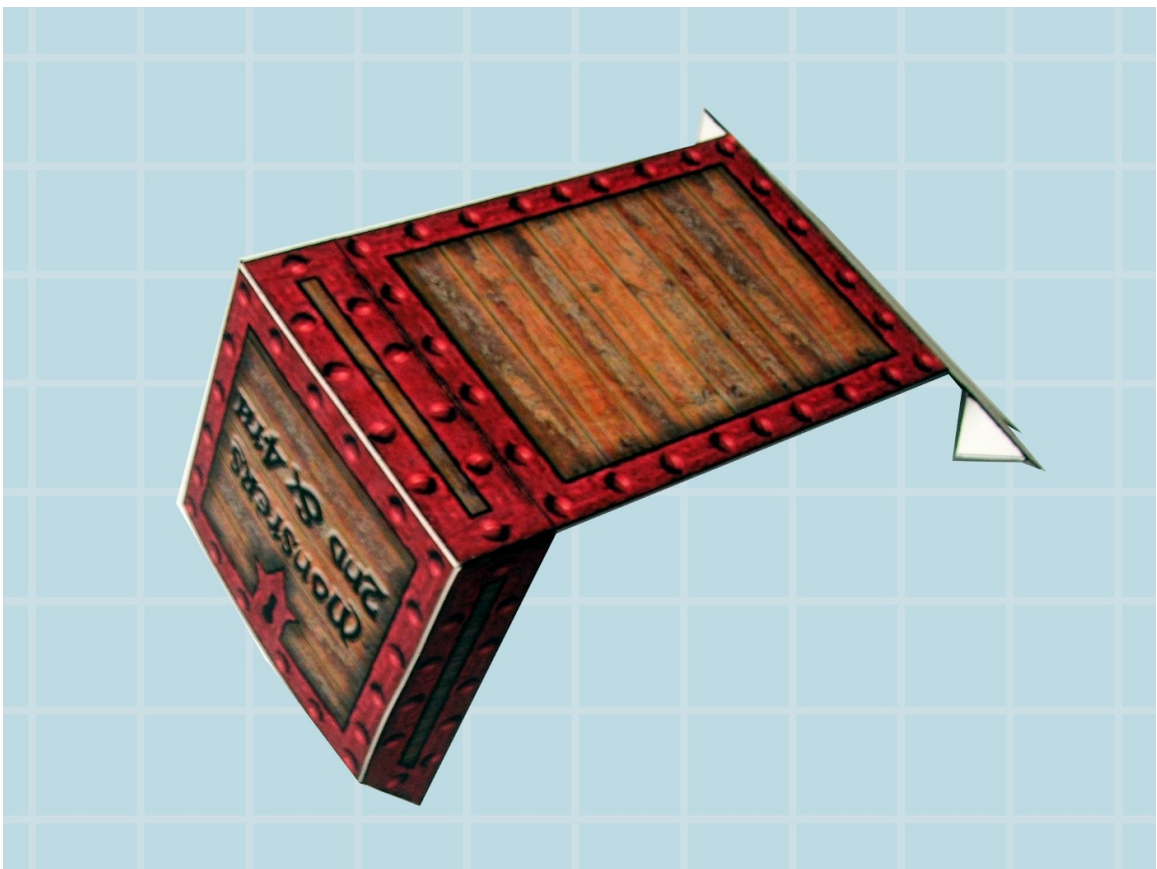


www.Sirrobo01.wordpress.com

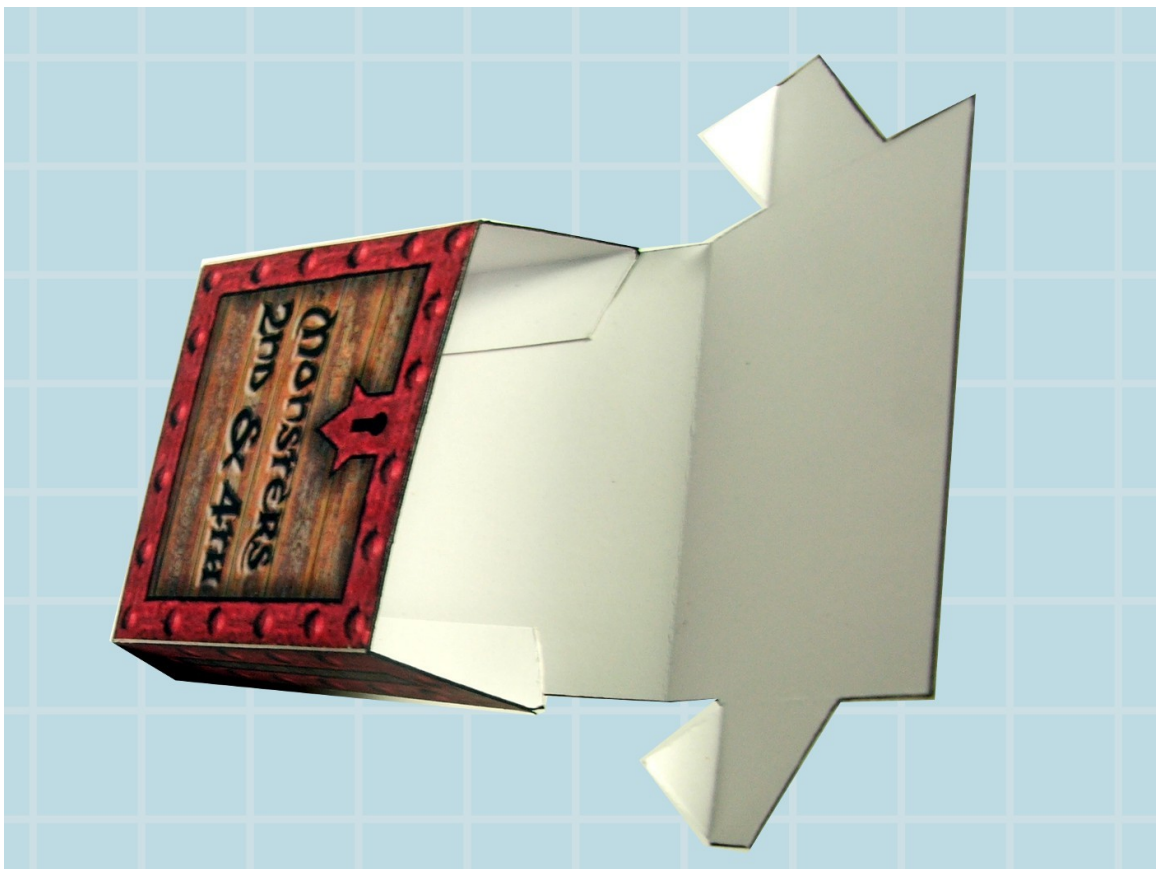
<http://sirrob01.files.wordpress.com/2012/11/dungeon-card-box.pdf>



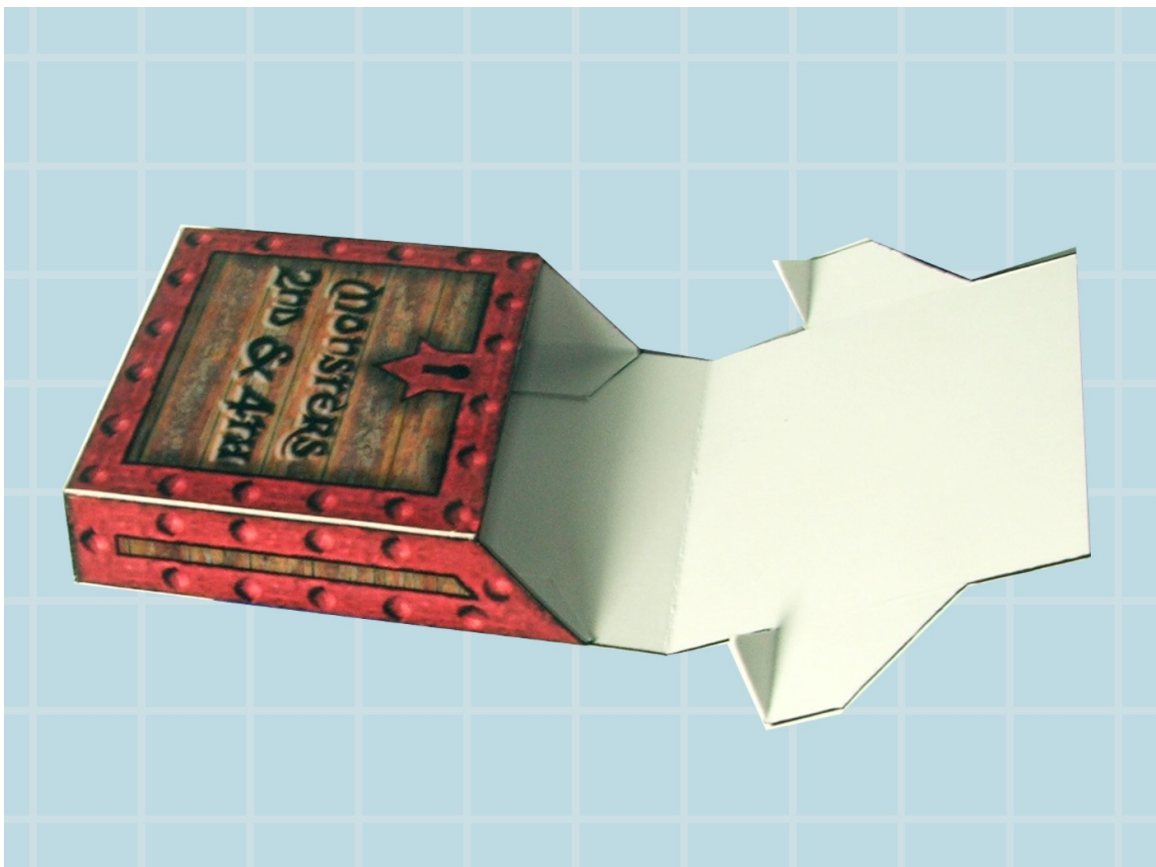
Cut out all components and edge outside edges with a black marker



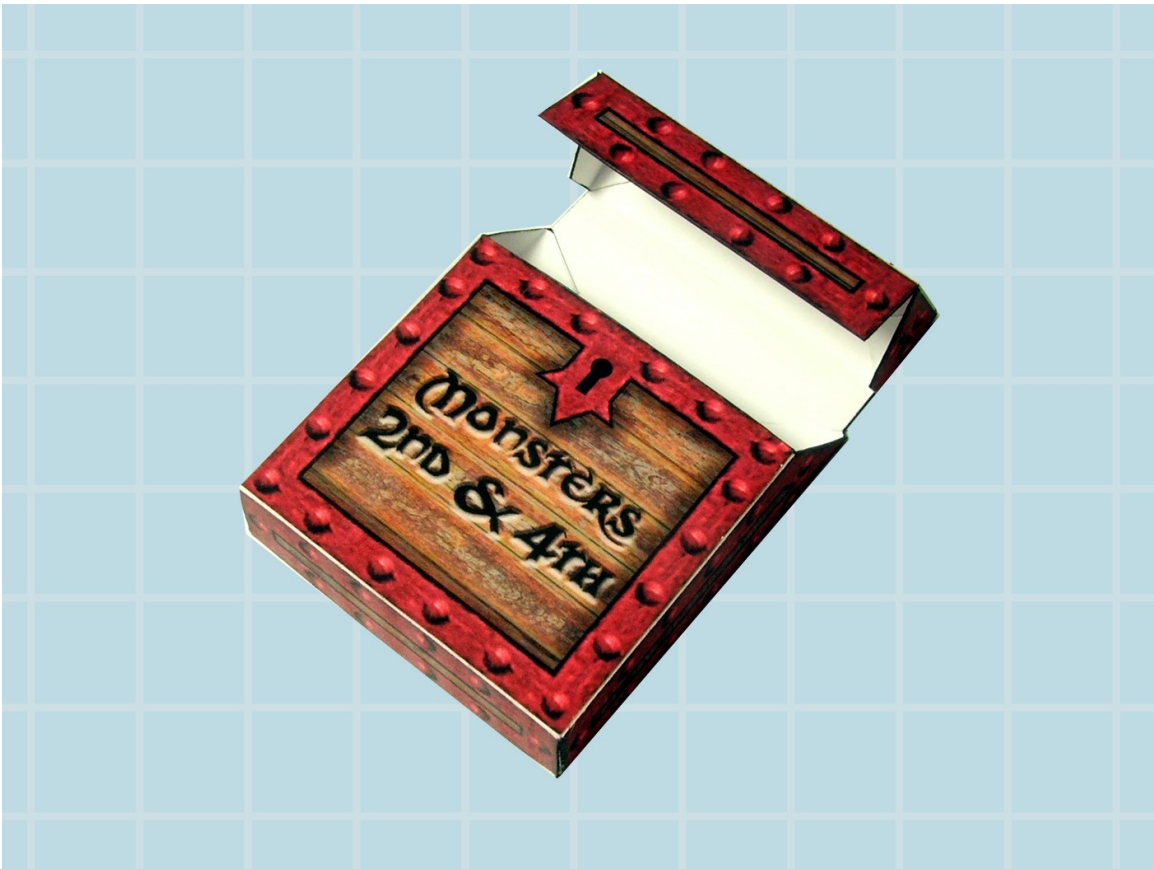
Fold back down and glue base to small tabs



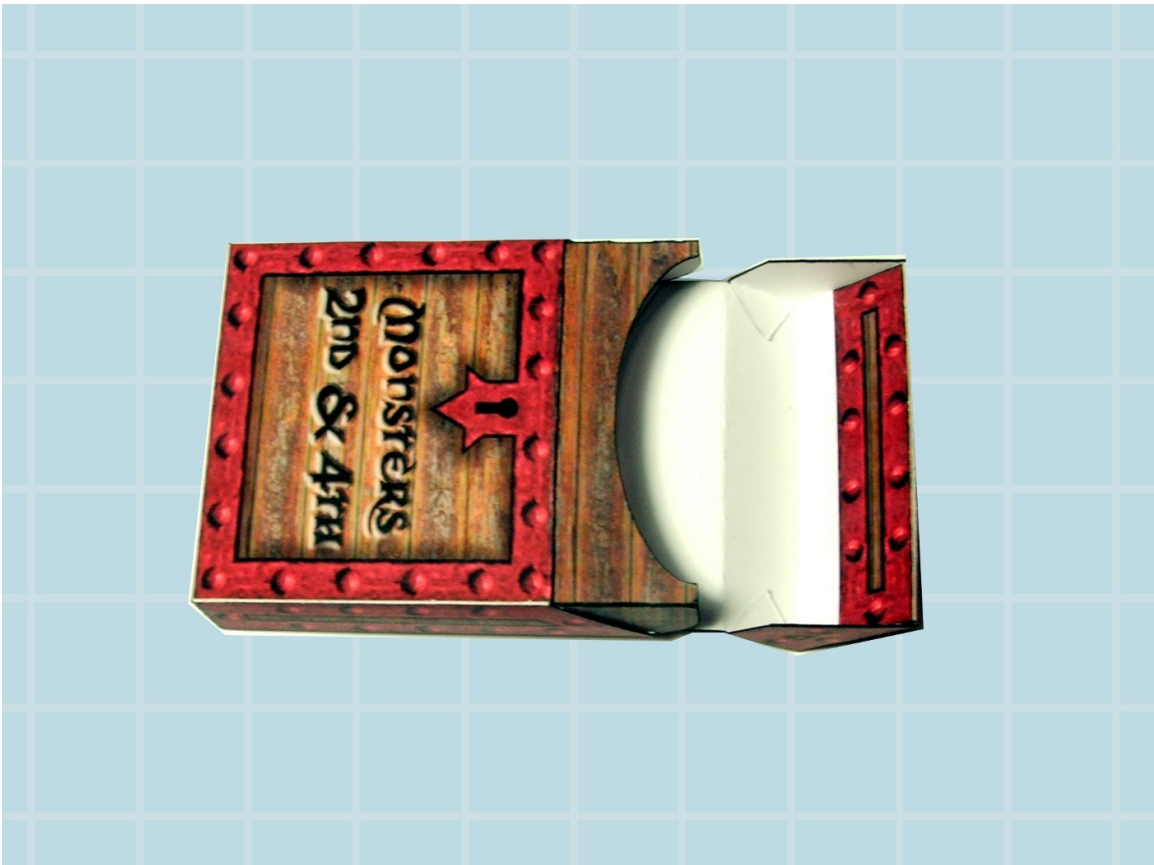
Glue the first long back tab in place



Glue second long back tab in place



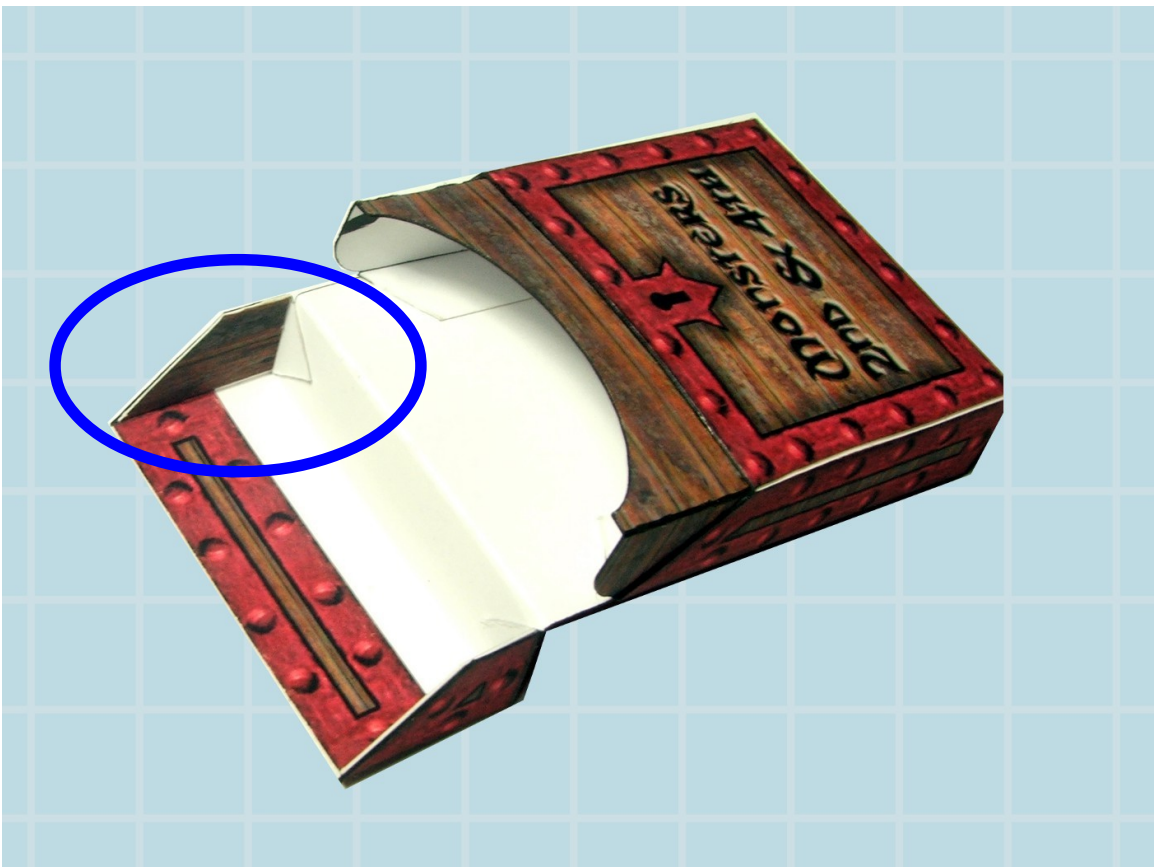
Glue top sides down onto the back



Glue front strengthening lip around and under. Test fit large insert then remove and smear glue around inside front edge and sides then slide back in place.



Close box lid and check for tightness if to loose cut small inside edge pieces to size and glue in place.



Edge any last white bits leave to dry overnight then fill with your cards.