



**This size was not test built**

A Power generator designed for standard 38mm/1.5inch Hex's. Designed to fit on 5 Hex's in a bone shape.

Five different colours included as layers

- ~ Red Trim
- ~ Blue Trim
- ~ Yellow Trim
- ~ Purple Trim
- ~ Green Trim



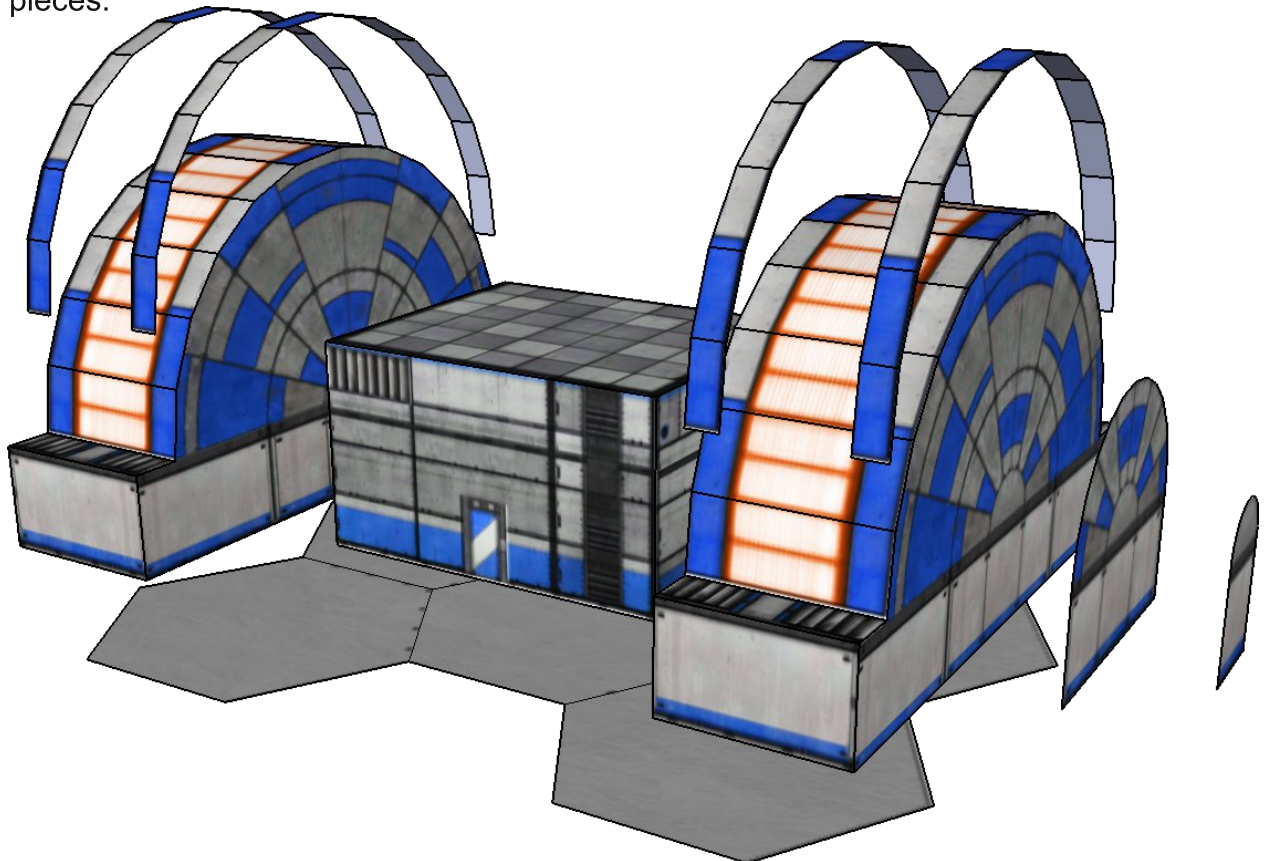
Also included some different layers for different Plasma colours around the top of the reactor halves.

Textures are not mine and full credit goes to PhilipK on the polycount forum:  
<http://www.polycount.com/forum/showthread.php?t=74895>

Sorry no detailed instructions but hopefully the below exploded image is enough of a guide to assemble.

**Few Assembly Notes:**

- ~ Test fit the top Trim reactor runners as they maybe slightly to long depending on card thickness used.
- ~ When glueing the large curved reactor pieces on, the large tabs at the bottom are not needed just push them in and use the edge tabs.
- ~ On the test build above I doubled up the card thickness on the two small reactor end pieces.

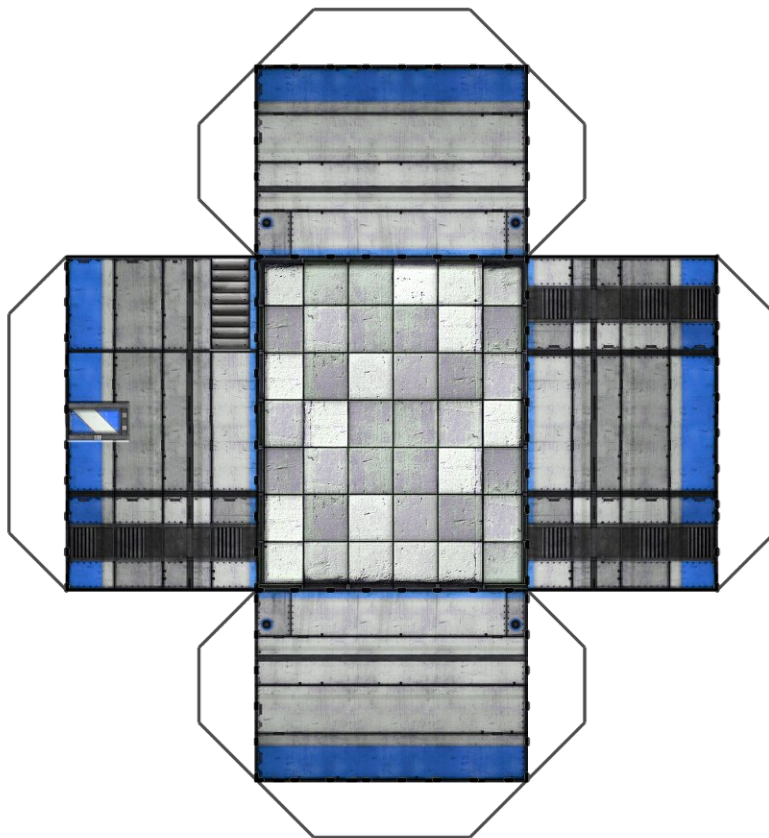
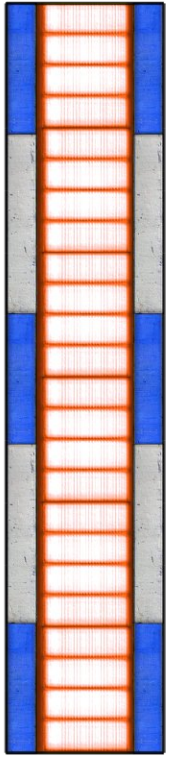
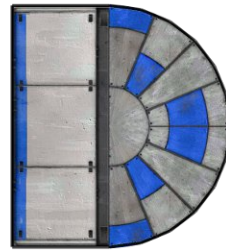
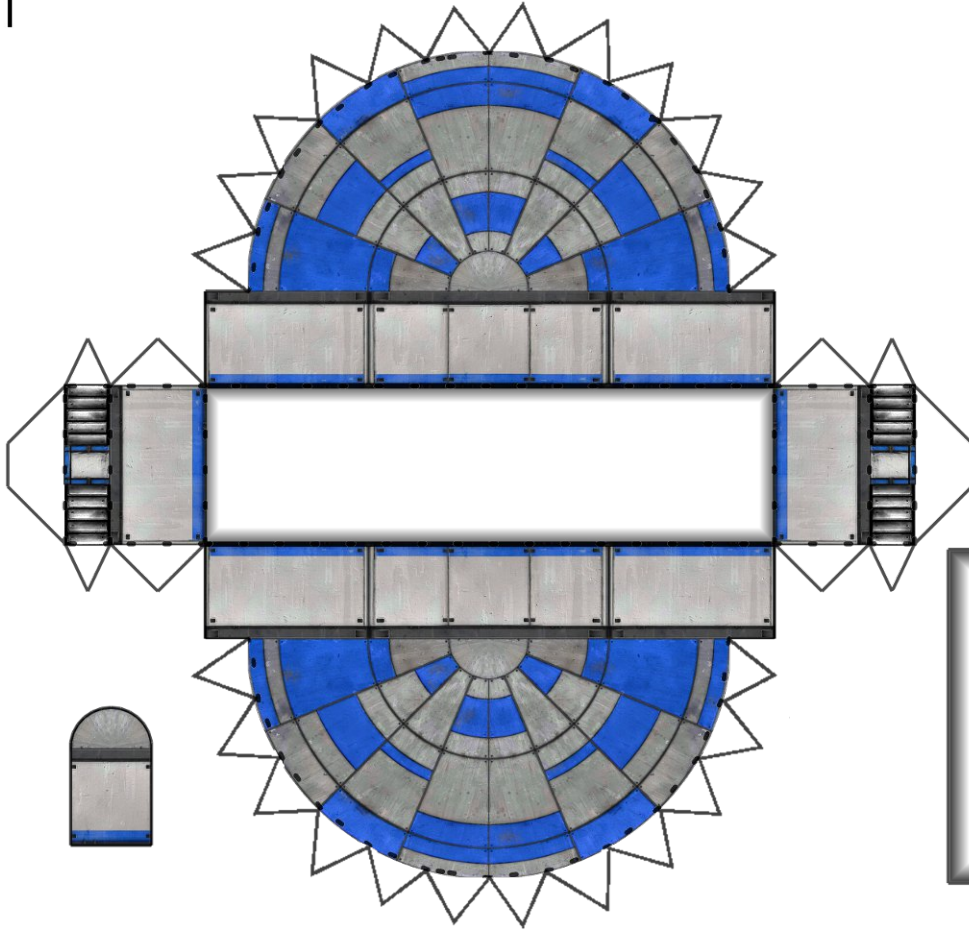




Attribution Non-Commercial Share Alike

# Power Plant One (Battletech - 38mm/1.5inch Hex)

[www.sirrobo01.wordpress.com](http://www.sirrobo01.wordpress.com)





Attribution Non-Commercial Share Alike

Power Plant One (Battletech - 38mm/1.5inch Hex)

[www.sirrobo01.wordpress.com](http://www.sirrobo01.wordpress.com)

