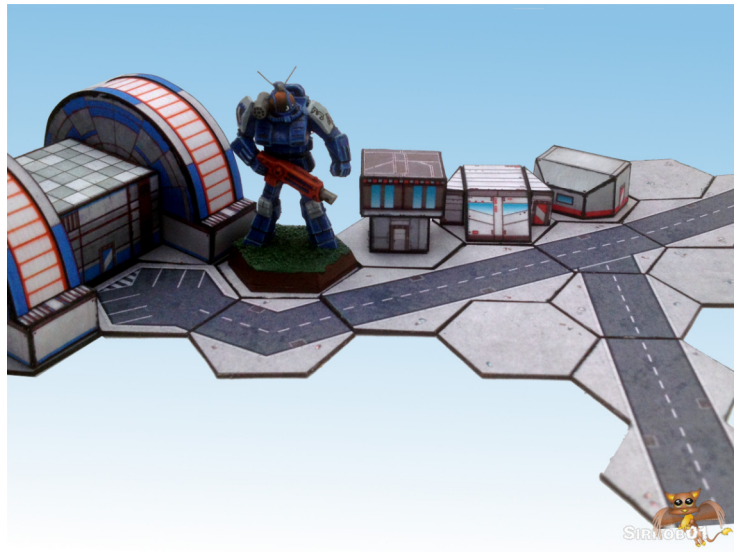




Attribution Non-Commercial Share Alike



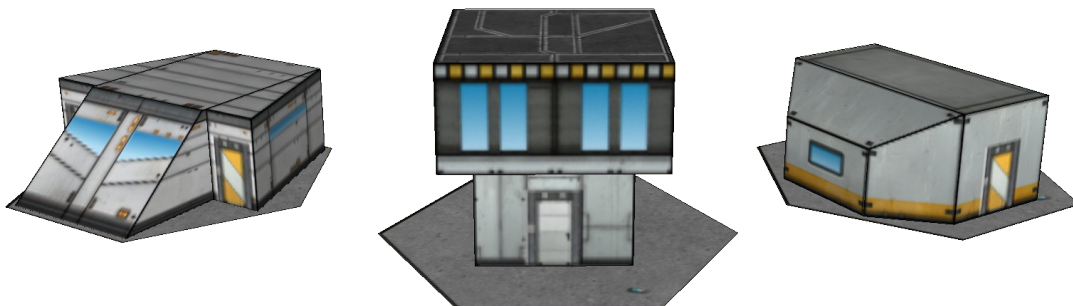
Three Sci-Fi style houses - 38mm (1.5inch version).

I've exported a 32mm old B-tech hex and 33mm new B-tech hex versions as well - check my blog for the other size.

Sorry No cut files this time, I'm just not using my cutter on these as they are at such a small scale.

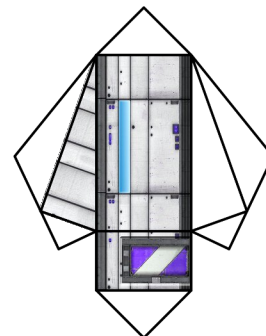
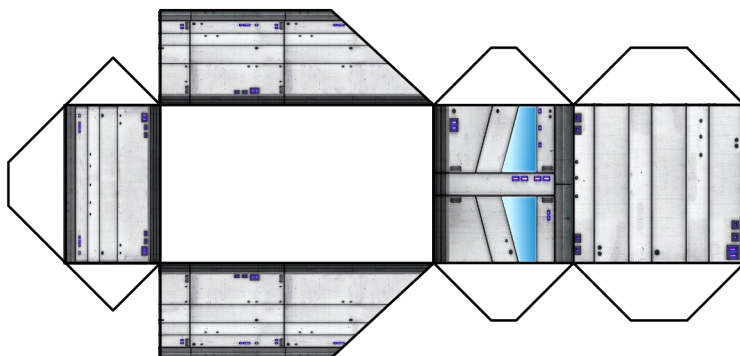
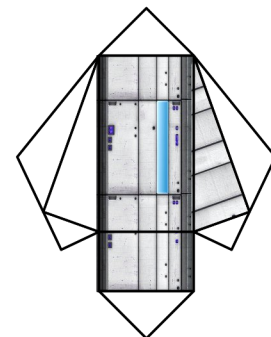
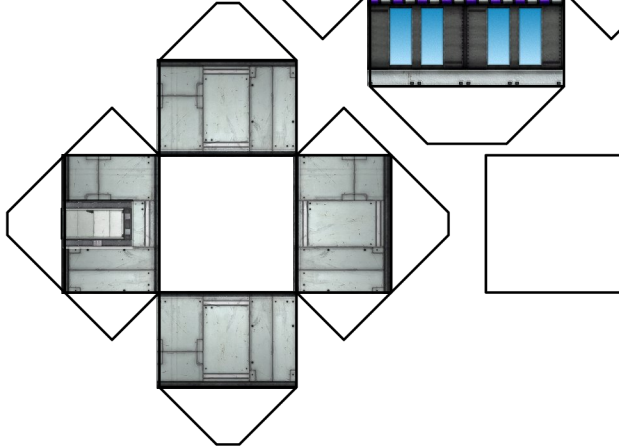
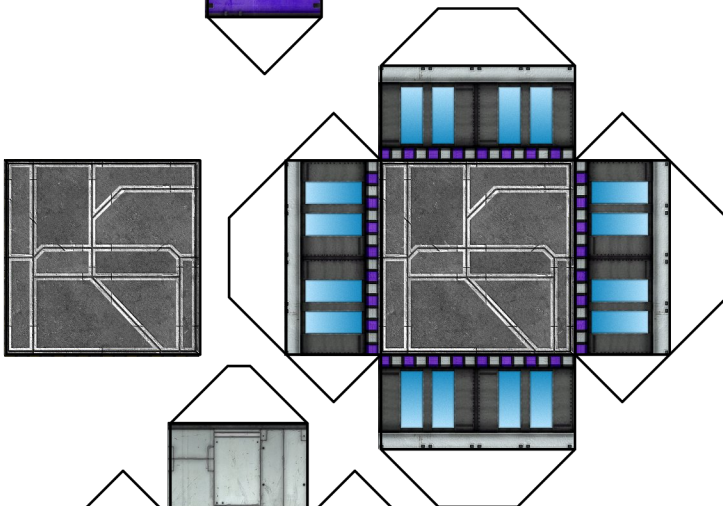
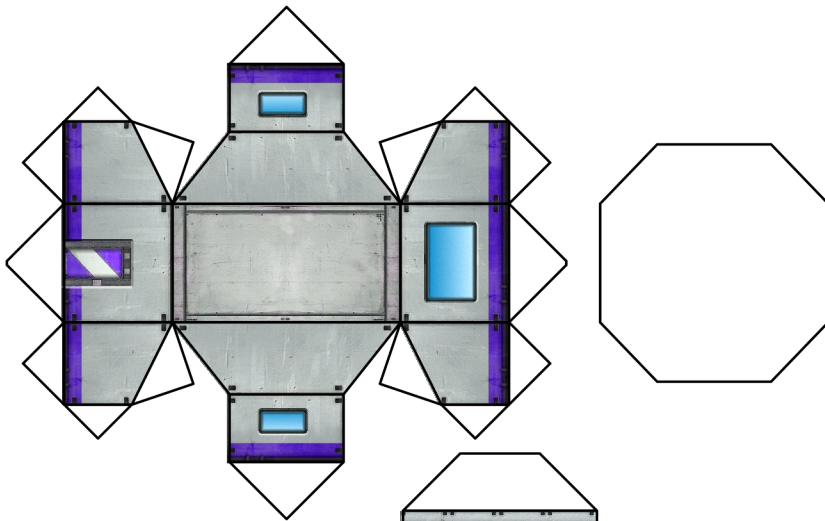
To help prevent your tiles slipping all over the place if you paint a thin layer of PVA glue on the backs it creates a sort of rubbery semi-grip finish although they will still slip just not as badly. There is a paint on rubber product but I couldn't locate any down under.

This version was not test built.





Attribution Non-Commercial Share Alike







Attribution Non-Commercial Share Alike

