



Attribution Non-Commercial Share Alike

Hex Bases

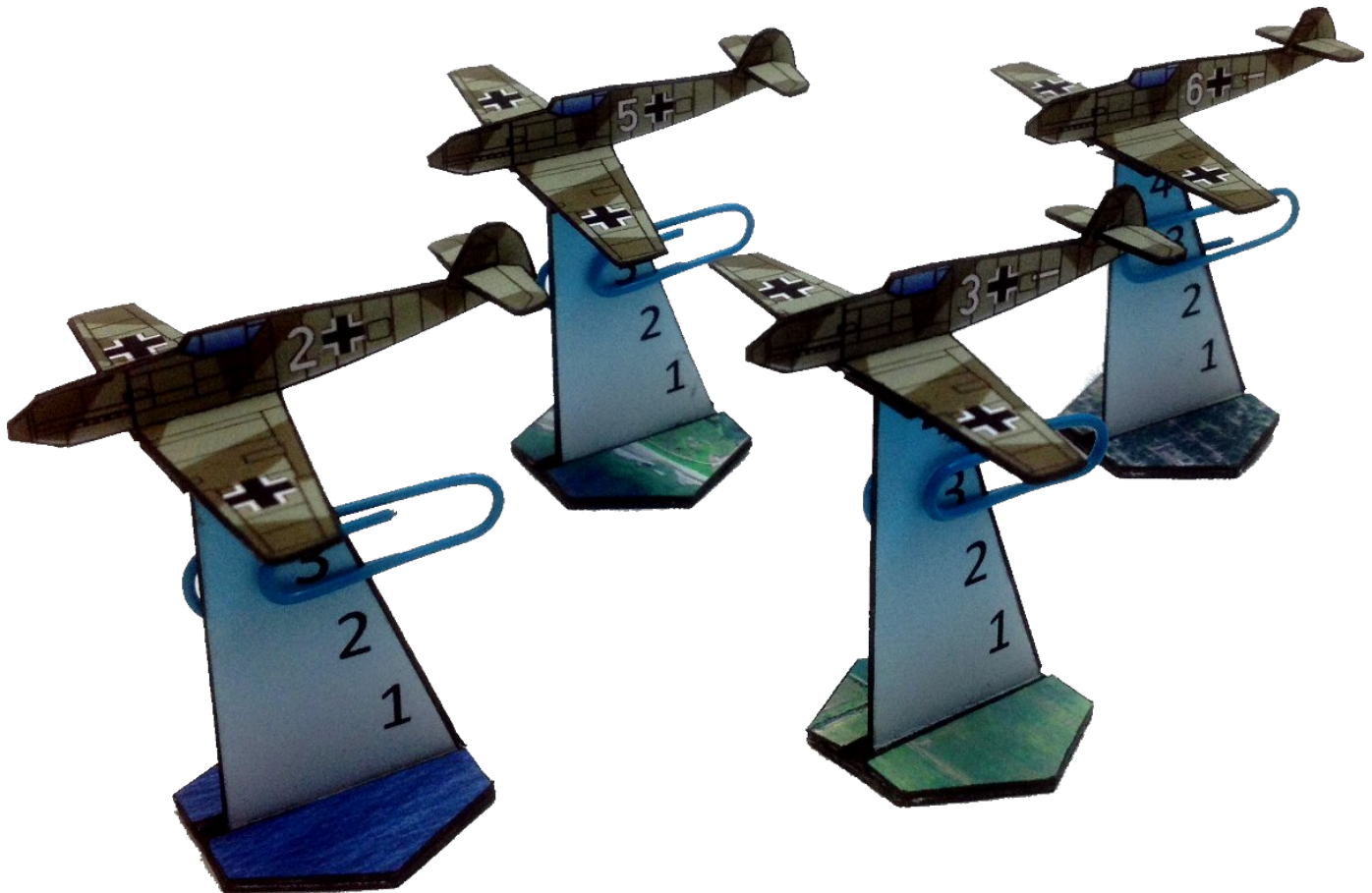
www.sirrobo01.wordpress.com



25mm Hex bases for use with my 2.5d aircraft, I've included 4 different types of hex's Ocean, Coast, Fields and City as well as a 'Pick n mix' sheet which includes 4 of each.

Mine were all made from 200gsm card about 80lb cover stock if I've done the conversion right.

Add a piece of thin flex mag sheet to the bottom of the bases to add a bit of weight. You can pick up self adhesive a4 sheets on ebay for a few dollars. Which will make about 30-40 bases.

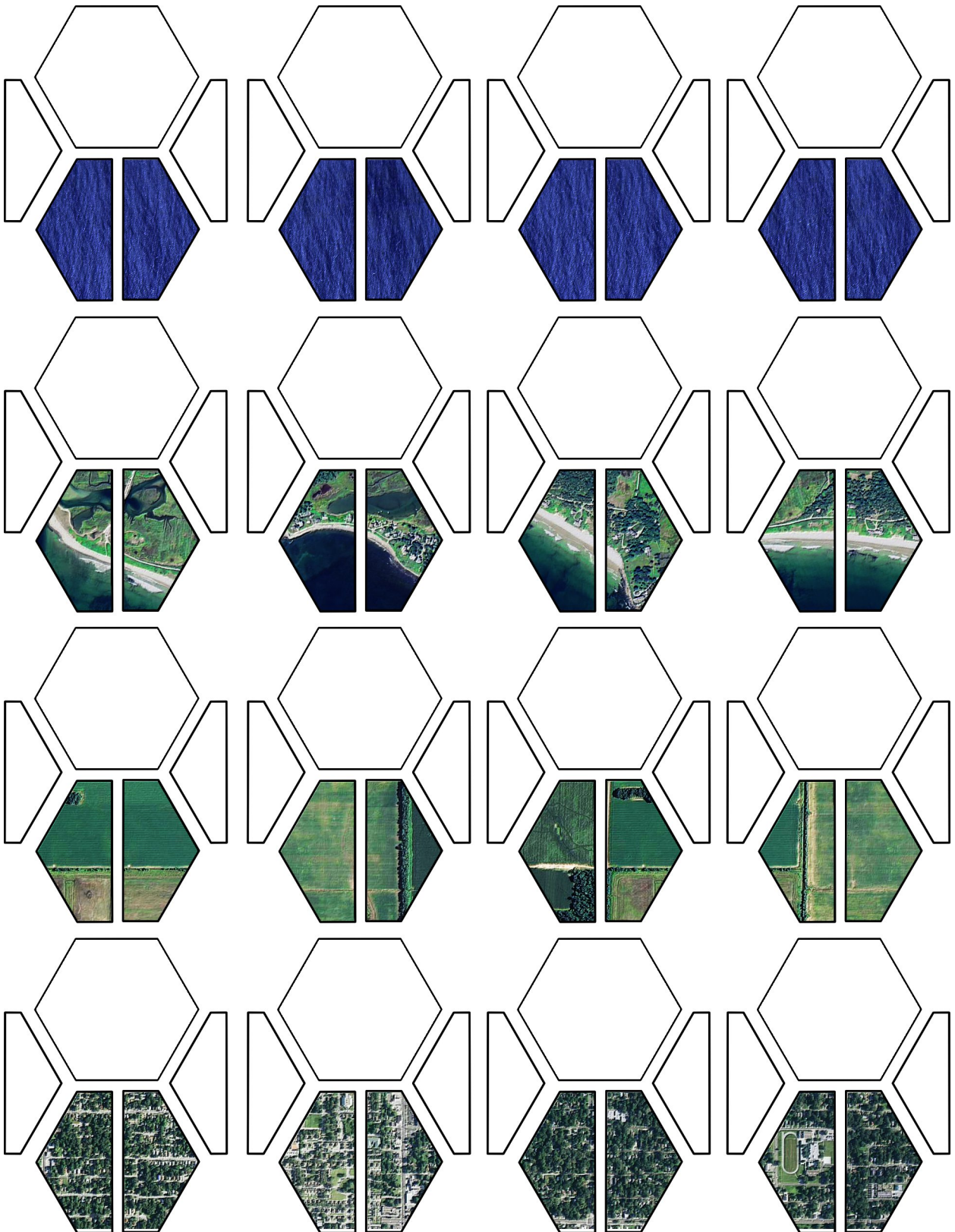




Attribution Non-Commercial Share Alike

Hex Bases

www.sirrobo01.wordpress.com

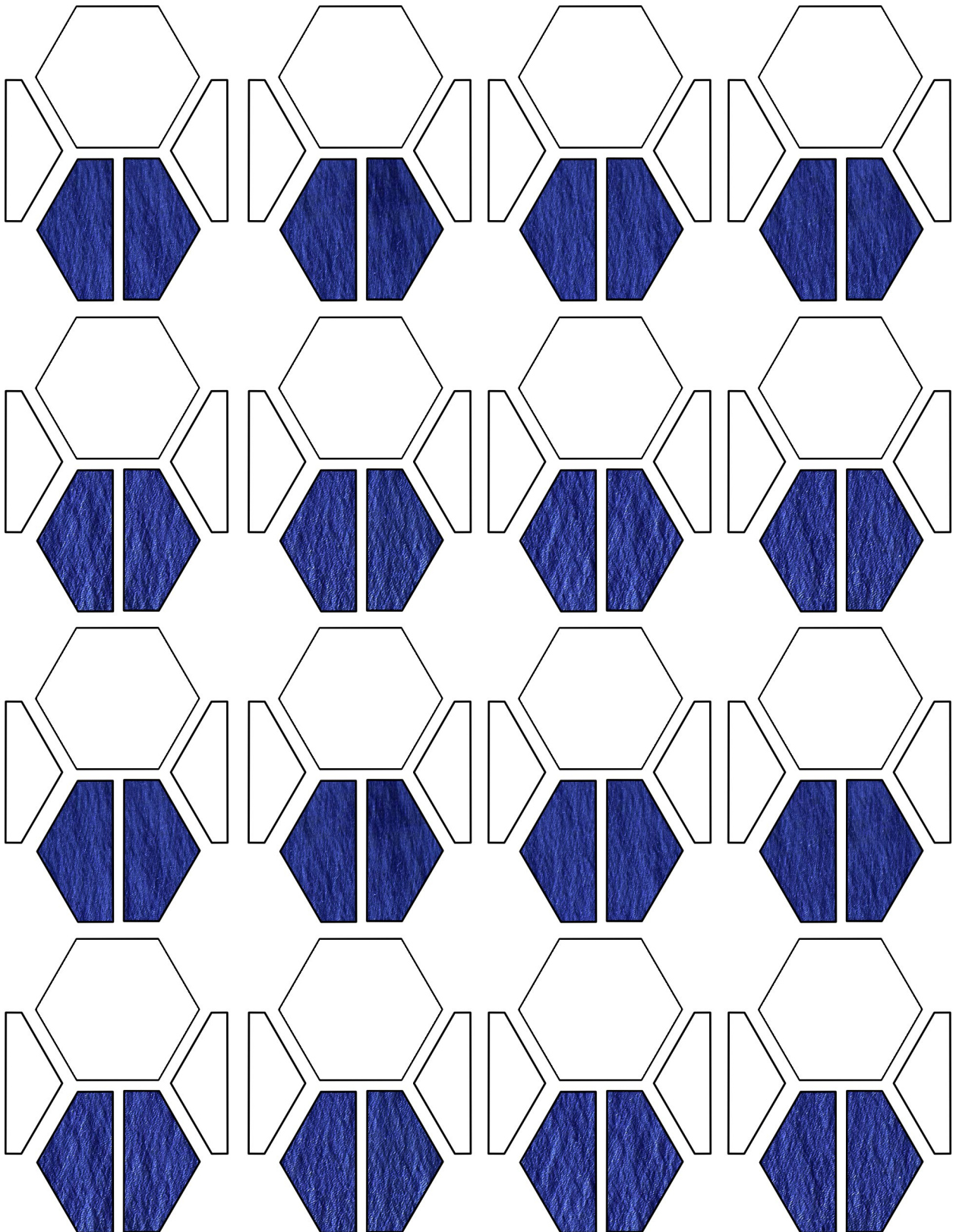




Attribution Non-Commercial Share Alike

Hex Bases

www.sirrobo01.wordpress.com

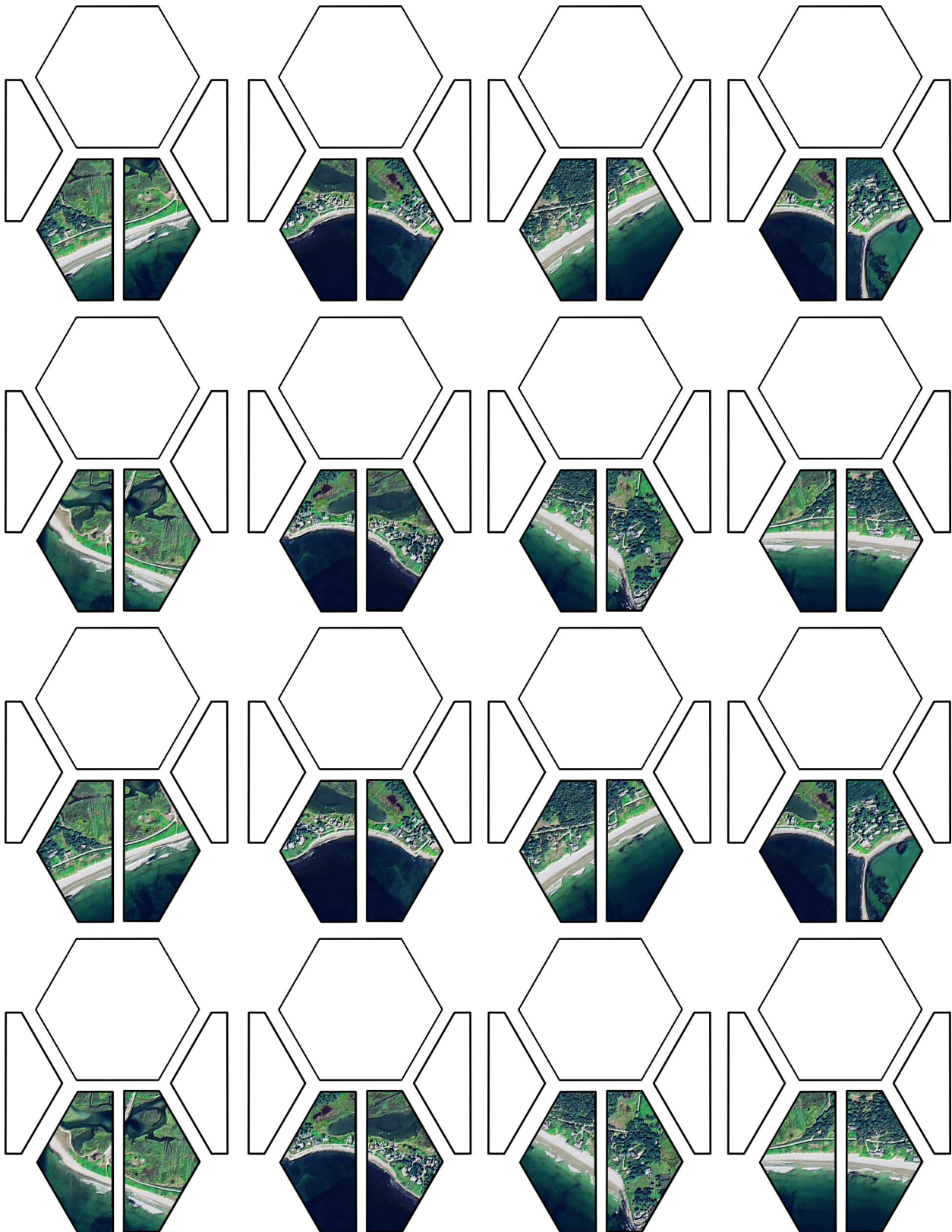




Attribution Non-Commercial Share Alike

Hex Bases

www.sirrobo01.wordpress.com

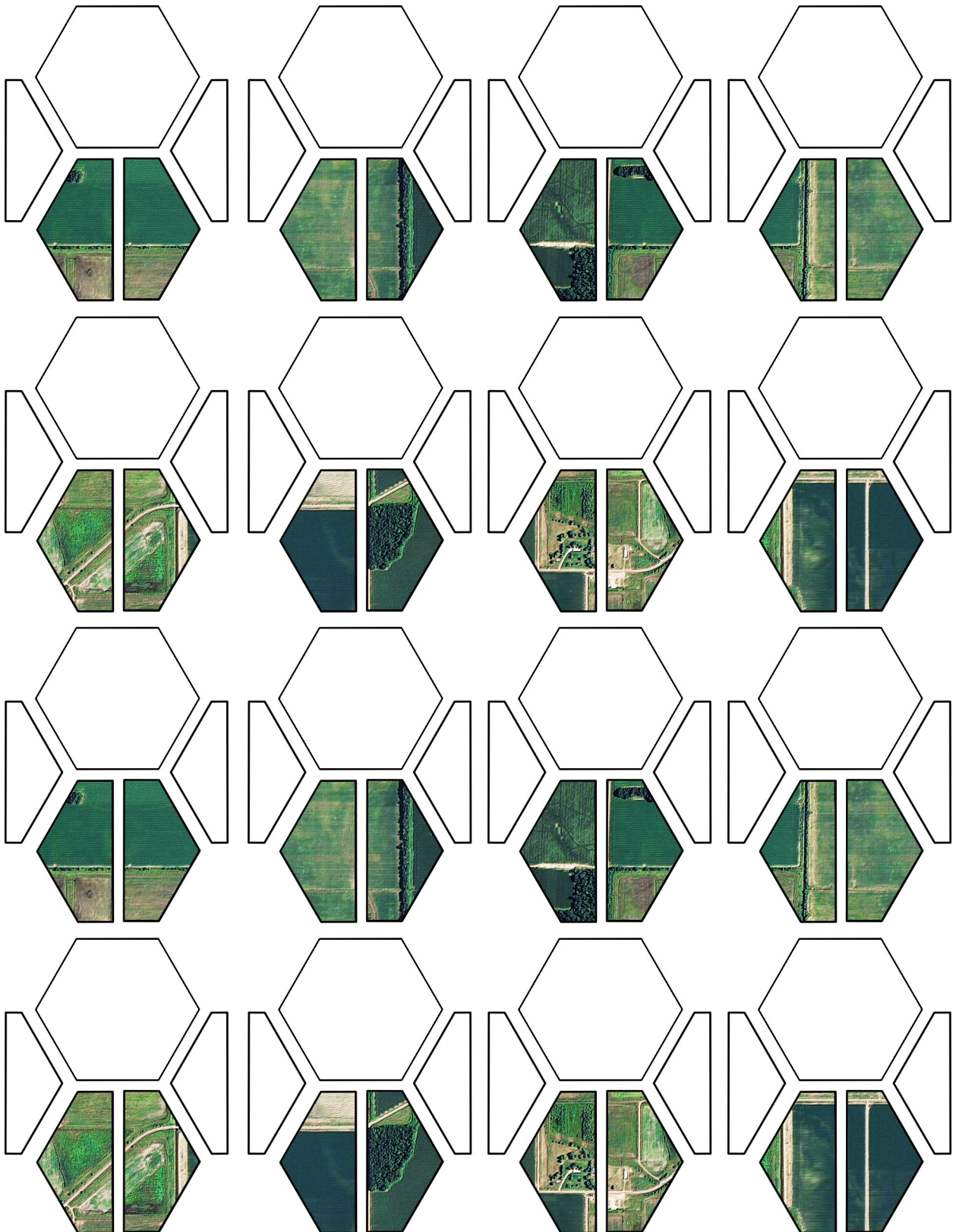




Attribution Non-Commercial Share Alike

Hex Bases

www.sirrobo01.wordpress.com

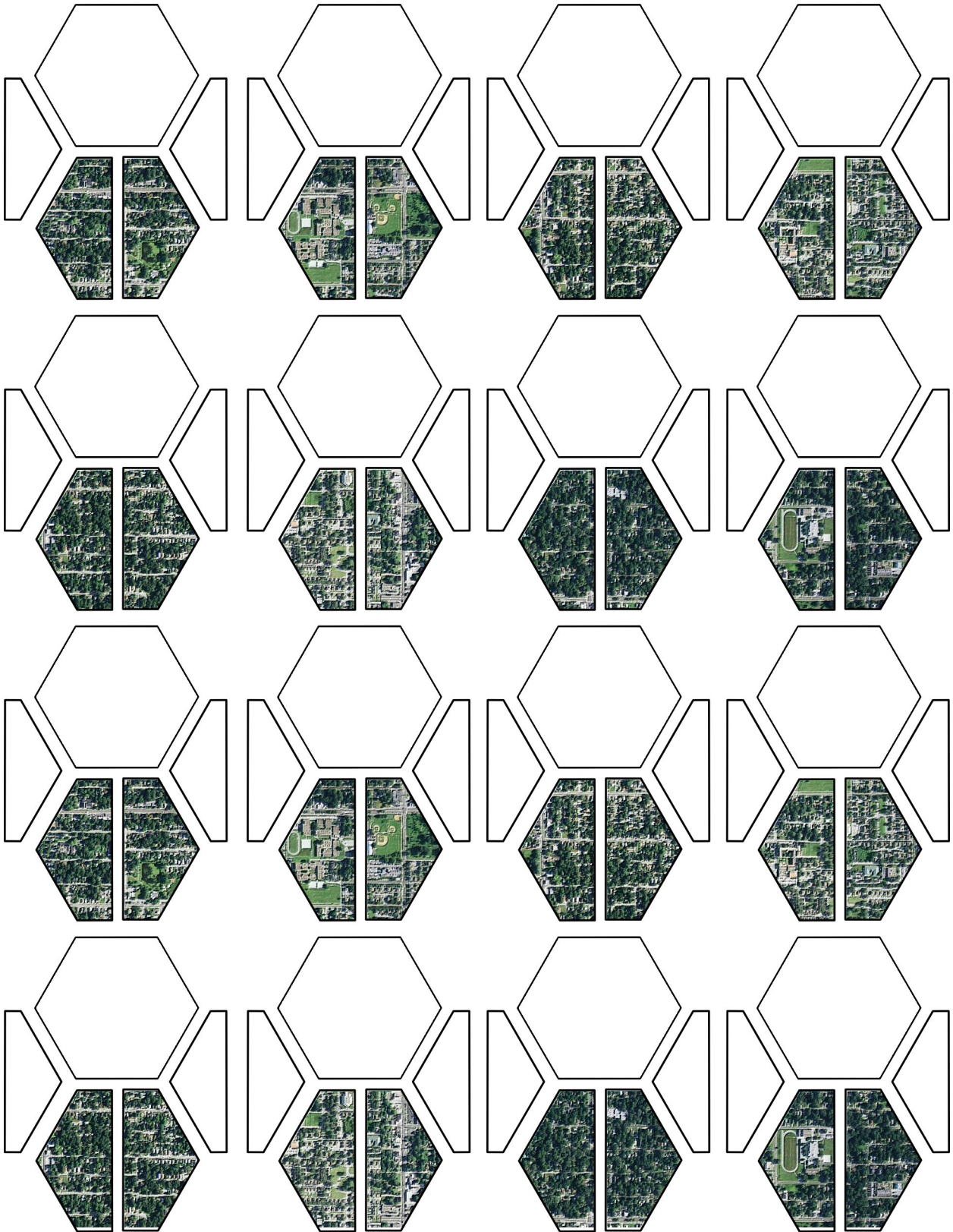




Attribution Non-Commercial Share Alike

Hex Bases

www.sirrobo01.wordpress.com





Attribution Non-Commercial Share Alike

Hex Bases

www.sirrobo01.wordpress.com



Tips for Assembly

- ~ Edge all parts and colour in a black strip down the middle of the Card Base
- ~ Glue the Spacers to the base - place the glue on the Spacers
- ~ Glue Hex Top to Spacers - place the glue on the Spacer Top
- ~ Stick Flex Mag sheet to bottom and trim with scissors. For a thicker base double up the Flex mag sheet layer.

